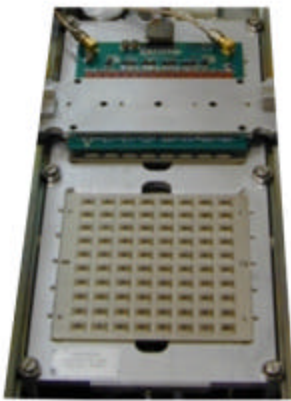




W-5910 QUARTZ CRYSTAL ETCHING SYSTEM

US PATENT 6,273,991 B1

- Quartz Crystal SMD devices are adjusted to target frequency by Ion Beam Etching of the electrode material
- The motional parameters of the crystal remain virtually unchanged
- Up to sixteen (16) parts are processed simultaneously for high system throughput
- Small crystal electrodes are as easy to precisely adjust as large electrodes
- High Drive capability
- Measured parameters are checked against easy to define Q.C. limits



Transport Boat

- SMD devices are continuously loaded, unloaded and adjusted to frequency with optional Elevator System
- Two magazines each hold five transport boats
- Transport boats carry SMD devices in two S&A pallets
- Supports 8x10, 6x15 or custom pallets

SPECIFICATIONS

250B-1 Frequency Range:

15 KHz to 220 MHz

250C Frequency Range:

15 KHz to 500 MHz

Etching Performance:

± 1 ppm typical final frequency

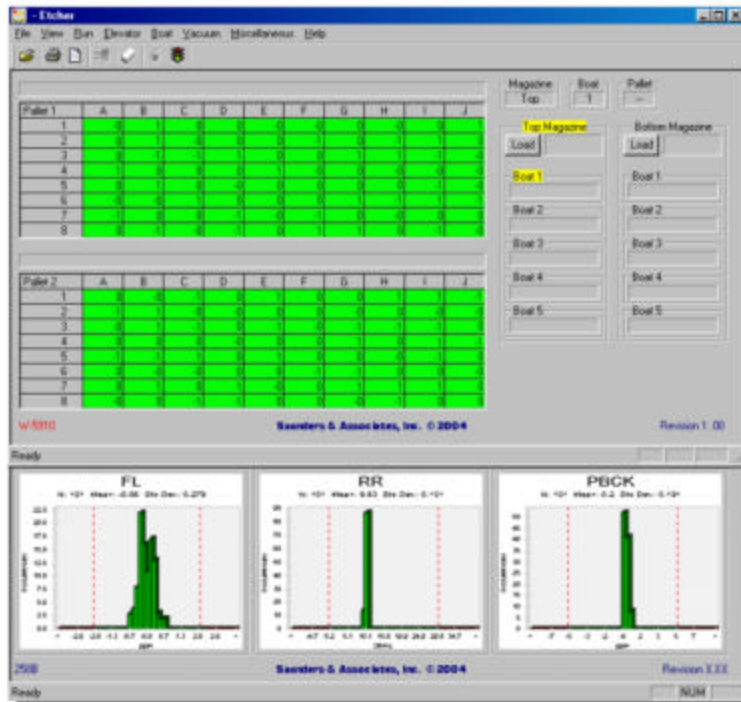
SAUNDERS & ASSOCIATES, LLC

2520 E. Rose Garden Lane - Phoenix, Arizona 85050 USA (602) 971-9977 FAX (602) 971-5522
E-Mail sales@saunders-assoc.com - World Wide Web <http://www.saunders-assoc.com>

SYSTEM CONFIGURATION

- S&A 250B-1 or 250C Network Analyzer
- Direct Drive Roughing Pump
- Cryo Pump (Diffusion Pump Option)
- S&A Single Channel High Drive (Optional)
- S&A 690 Elevator System (Optional)
- S&A Ion Gun
- Computer
- System Software
- Light Pole

SCREEN FORMAT



FACILITY REQUIREMENTS

- **Power:** 380VAC/208VAC
3-Phase, 7KVA, 50/60 Hz
- **Inlet Pressure:** 90 - 100 PSIG
 - Air: 90 - 100 PSIG
 - Nitrogen: 70 - 100 PSIG
 - Process Gas: 20 PSIG
- **Dimensions:**
 - Standard: W 53" x D 37" x H 88"
 - With Elevator: W 53" x D 59" x H 88"

SAUNDERS & ASSOCIATES, LLC