

S&A

4310 BENCH TOP TEMPERATURE TEST CHAMBER FOR COMPONENT TESTING



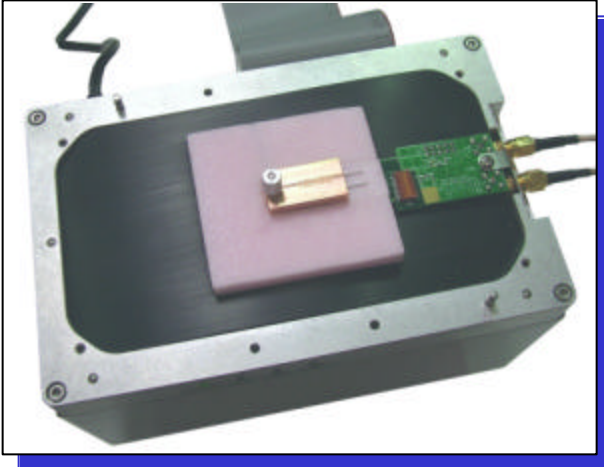
- **Stability:** $\pm 0.1^{\circ}$ C including effects of line voltage, ambient temperature and aging
- **Temperature Range:** - 40° C to +105° C @ 25° C Ambient
- **Energy Source:** Semi-conductor Peltier device
- **Remote Operation:** Remotely controlled via OLE or RS232C option
- **Flexible Tooling:** Easily customized for testing needs
- **Dimensions:** 7.5" W x 4.75" D x 6.5" H
19.05cm W x 12.065cm D x 16.51cm H
- **Example Components:** Crystal, Oscillator, Inductor, Capacitor, Resistor, IC, etc.

SAUNDERS & ASSOCIATES, LLC

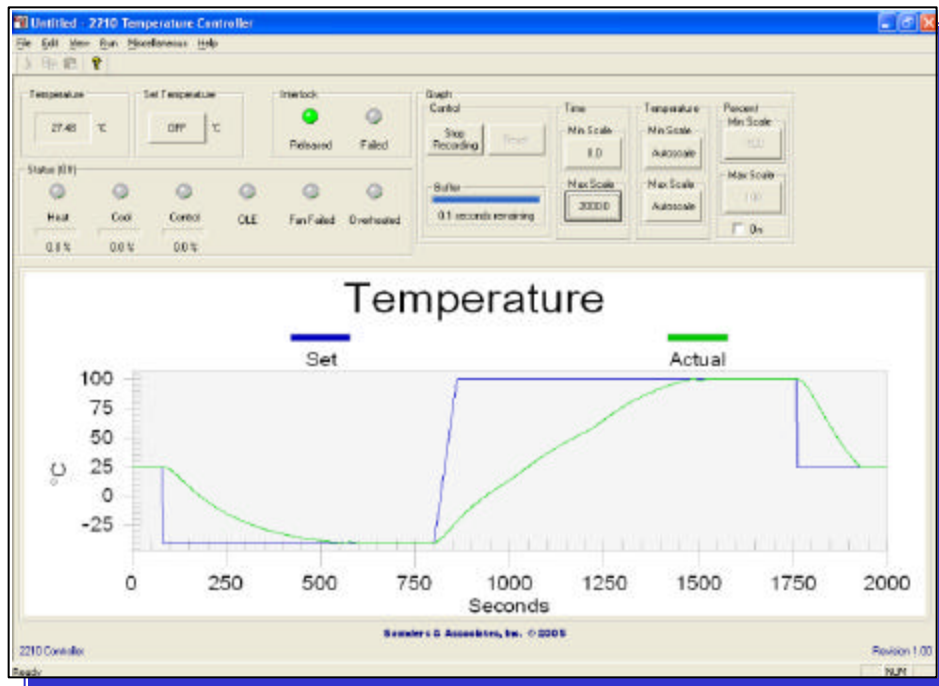
2520 E. Rose Garden Lane - Phoenix, Arizona 85050 USA (602) 971-9977 FAX (602) 971-5522
E-Mail sales@saunders-assoc.com - World Wide Web <http://www.saunders-assoc.com>

SYSTEM CONFIGURATION

- S&A 4310 Bench Top Temperature Test Chamber
- Component Test Fixture
- S&A PCI TTL I/O CARD
- 2210 Temperature Controller
- *Windows*® based Software
- Printer (Optional)
- **Computer Requirements:**
 - Minimum 500 MHz Pentium III
 - One full PCI slot with +3.3V & 5V power,
 - Windows XP



Example fixture for crystal components



- 40°C to +105°C temperature transition in seconds

SAUNDERS & ASSOCIATES, LLC