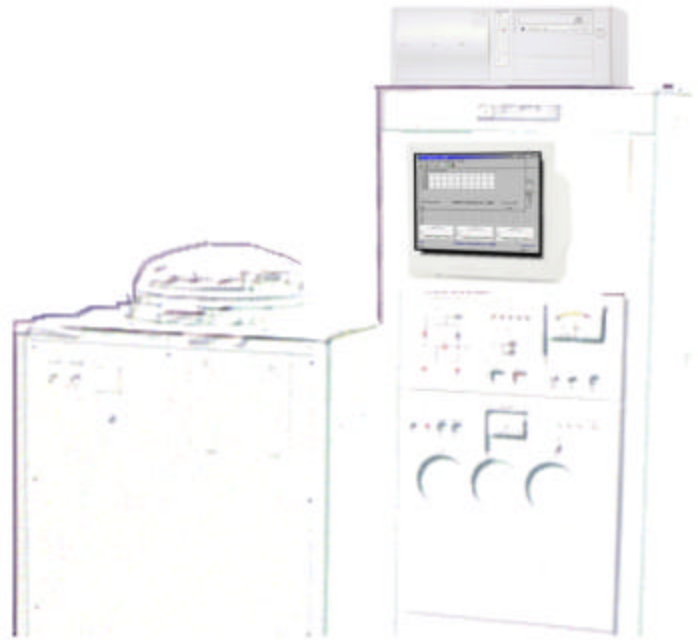




## W-280A/6SA OSCILLATOR PLATING SYSTEM UPGRADE

- Extends the frequency range of the SC-6SA Plating System<sup>1</sup> to 400 MHz
- Increases frequency accuracy
- Uses existing filaments and crystal wheels
- Two Pass plating
- Over 10 different oscillator parameter measurements
- Measured parameters checked against user defined QC limits (No ring test required)
- Supports wheels with different number of positions (e.g. 72 or 144)
- Upgrade can be configured for a variety of plating system models



<sup>1</sup> SC-6SA is a trademark of Showa Shinku Corporation, Japan

### SPECIFICATIONS

Frequency Range :	1 MHz to 400 MHz
Plating Performance :	± 2 ppm* at series, typical
Typical Process Time (144 Position Wheel) :	10 minutes + pump down time
Oscillator Analyzer :	S&A 280A

\* Proprietary measurement and calibration algorithms provide correlation to industry standard crystal measurement equipment.

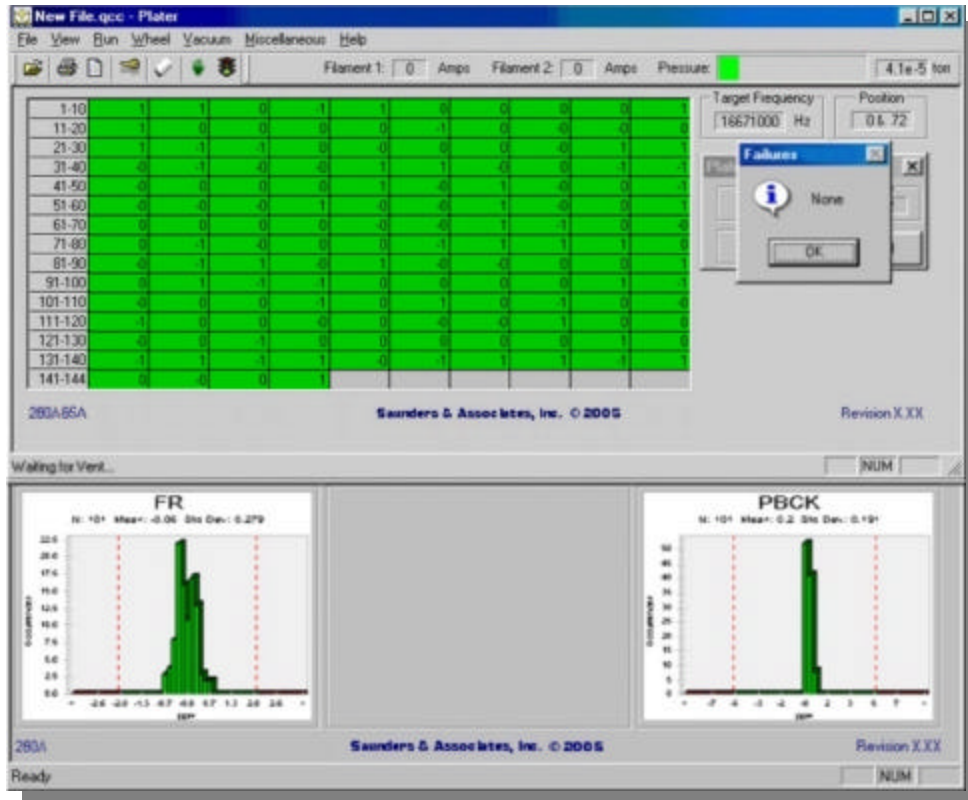
## SAUNDERS & ASSOCIATES, LLC

2520 E. Rose Garden Lane - Phoenix, Arizona 85050 USA (602) 971-9977 FAX (602) 971-5522  
E-Mail [sales@saunders-assoc.com](mailto:sales@saunders-assoc.com) - World Wide Web <http://www.saunders-assoc.com>

## SYSTEM CONFIGURATION

- S&A 250B/6SA Relay Assembly
- *Windows*<sup>®</sup> based System Software
- Cabling to accommodate existing DUT connections
- S&A MFC-100
- Computer Requirement:
  - Minimum 500 MHz Pentium III,
  - full PCI slot with +5V & 3.3V power

## SCREEN FORMAT



# SAUNDERS & ASSOCIATES, LLC