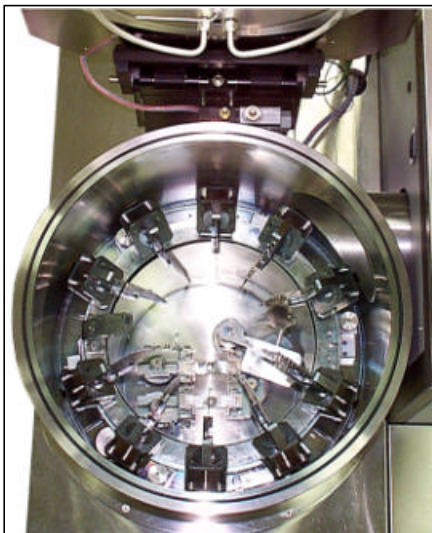




W-5600 BASE PLATING SYSTEM

- Fully automated, computer controlled Base Plating System
- S&A 250B Network Analyzer Monitor Crystal Measurement System
- Quartz monitor crystal rotates on the same spherical radius as devices being plated for accurate plating control
(Patent No. 6,090,444)
- Each mask can be plated to a different thickness in the same deposition cycle
- Mechanical assemblies shielded from plating material and easily removed for cleaning
- Two spring mounted filament sources for extended filament life



- Low profile bell jar assembly for easy operator access
- Supports various mask systems
- Substrate heater
- RF plasma bombard
- Plating units: Å, Hz, F², Å of Si O₂
- Fast pump down time for high system throughput

SPECIFICATIONS

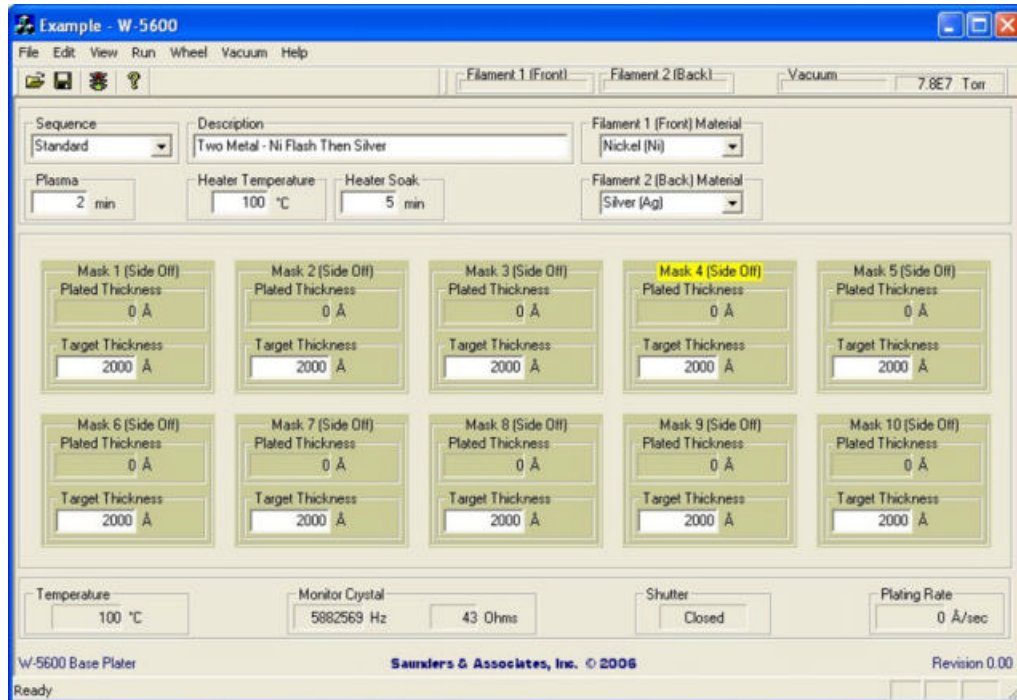
Plating Uniformity:

2% of plateback typical *

* Performance based on mask dimensions of not greater than 3 x 4.2 inches.

SAUNDERS & ASSOCIATES, INC.

2520 E. Rose Garden Lane - Phoenix, Arizona 85050 USA (602) 971-9977 FAX (602) 971-5522
E-Mail sales@saunders-assoc.com - World Wide Web <http://www.saunders-assoc.com>



Main Screen Display showing each mask status and deposition target.

SYSTEM CONFIGURATION

- Direct Drive Roughing Pump
- Cryo or Diffusion Pump
- Automatic Mask Flipping Mechanism
- Two Metal, 3 Layer Capability
- Substrate Heater
- S&A 250B Network Analyzer
- Plasma Cleaning
- Light pole
- Computer
- *Windows*[®] based System Software
- Printer (optional)

FACILITY REQUIREMENTS

- **Power:** 380V or 208V 3-PHASE, 7 KVA, 50/60 Hz
- **Inlet Pressures:**
 - **Air:** 90 – 100 PSIG
 - **Nitrogen:** 70 – 100 PSIG
 - **Argon/Oxygen 80/20 (plasma cleaning):** 10 PSIG
- **Cryo Pump Water Cooling:** 0.50 GPM @ 60°- 80°F
- **Diffusion Pump Water Cooling:** 0.25 GPM @ 60°- 80°F
- **Dimensions:** W 53 x D 34 x H 67.5 Inches (excluding Cryo Compressor)

SAUNDERS & ASSOCIATES, INC.