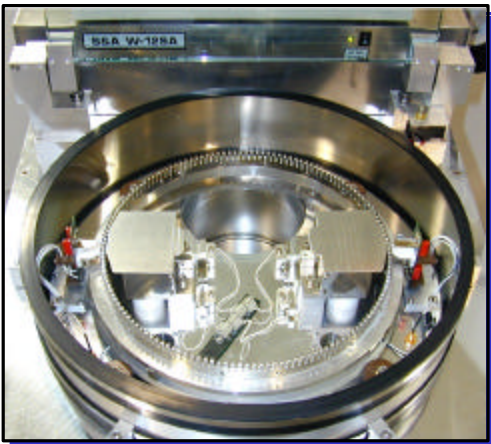




## W-250B/12SA CRYSTAL PLATING SYSTEM

- Extremely fast quartz crystal plating system
- Plates two crystals at the same time
- High conductance vacuum design for quick pump down
- Fast stepper motor drive system with 0.1 second index time
- Precision plating to load resonant frequency using "Measured FL" method
- Over 50 different crystal parameter QC measurements
- Continuous crystal high drive capability for improved crystal DLD
- Small chassis design for minimum clean room space requirement



- User-friendly *Windows*<sup>®</sup> based system software
- Supports standard 6SA type, 72 position HC-45 and HC-49U, and 144 position HC-49S plating wheels
- SMD option supports easy load 126 position SMD plating discs
- Standard 6SA type filaments
- S&A 900A SMD Plating Disc Unloader/Loader system available

### SPECIFICATIONS

250B-1 Frequency Range:	15 KHz to 220 MHz
250C Frequency Range:	15 KHz to 500 MHz
Plating Performance:	± 1 ppm typical final frequency

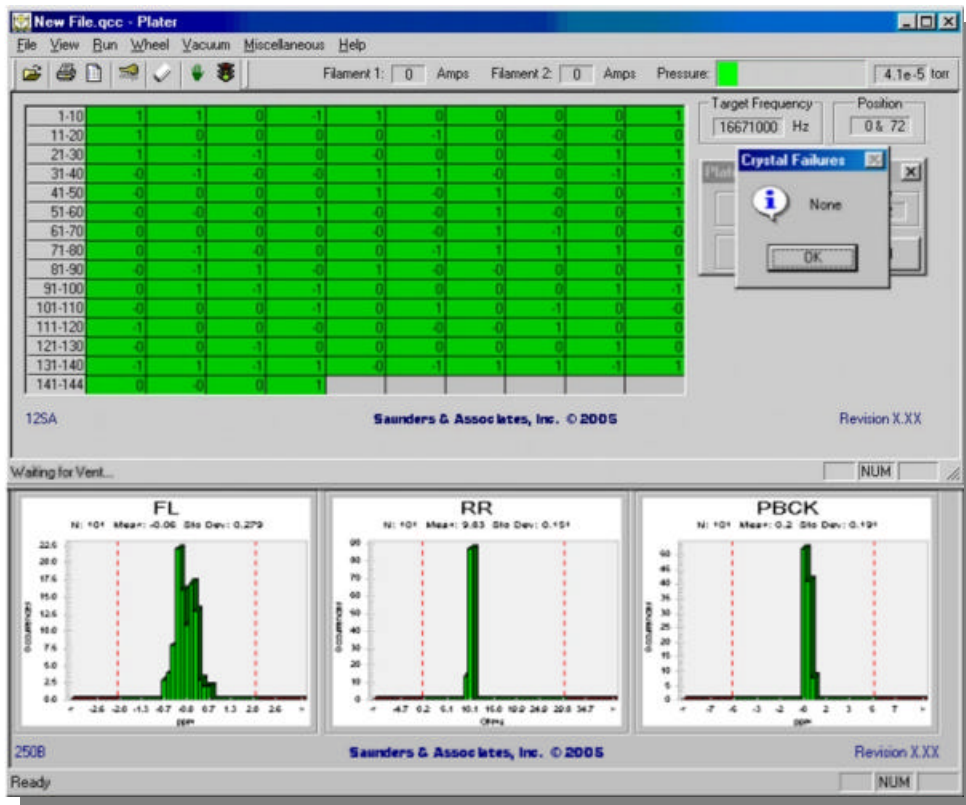
## SAUNDERS & ASSOCIATES, INC.

2520 E. Rose Garden Lane - Phoenix, Arizona 85050 USA (602) 971-9977 FAX (602) 971-5522  
E-Mail [sales@saunders-assoc.com](mailto:sales@saunders-assoc.com) - World Wide Web <http://www.saunders-assoc.com>

## SYSTEM CONFIGURATION

- S&A 250B-1 or 250C Network Analyzer
- Direct Drive Roughing Pump
- Diffusion Pump
- S&A PCI TTL I/O Card
- Computer
- *Windows*<sup>®</sup> based System Software
- Plating Wheels (Optional)
- Light Pole (Optional)

## SCREEN FORMAT



## FACILITY REQUIREMENTS

- **Power:** 380 Volts, 3-Phase, 15 Amps
- **Inlet Pressures:** 150 PSIG Maximum
  - **Air:** 90 PSIG
  - **Nitrogen:** 20 PSIG
- **Water Cooling (Diffusion):** 0.15 GPM @ 16-27° C
- **Dimensions:** W 60 x D 105 x H 100 cm

# SAUNDERS & ASSOCIATES, INC.