

### *What does it take to upgrade?*

System Upgrade kit consists of:

- 1** S&A 250B Network Analyzer
- 2** PCI TTL I/O card
- 3** Minimum 500 MHz Pentium III, one full PCI slot with +5V & 3.3V power, & Windows 98



### *Why Upgrade?*

- 1** Higher system throughput improvement due to faster measurement with the 250B Network Analyzer.
- 2** Drive Level Dependency (DLD) measurement is approximately 3 times faster with 250B Network Analyzer.
- 3** User-friendly Windows system software.
- 4** Extensive graphing, statistical, distribution data, and printout capabilities. Custom printouts can be created using Seagate Crystal Reports (optional).
- 5** All data is published in Microsoft Access™ compatible data base in real time. Data can be exported to Microsoft Excel™ for custom data analysis.

All trademarks are the property of their respective owners.

## **SAUNDERS & ASSOCIATES, INC.**

2520 E. Rose Garden Lane - Phoenix, Arizona 85050 USA (602) 971-9977 FAX (602) 971-5522  
E-Mail [sales@saunders-assoc.com](mailto:sales@saunders-assoc.com) - World Wide Web <http://www.saunders-assoc.com>

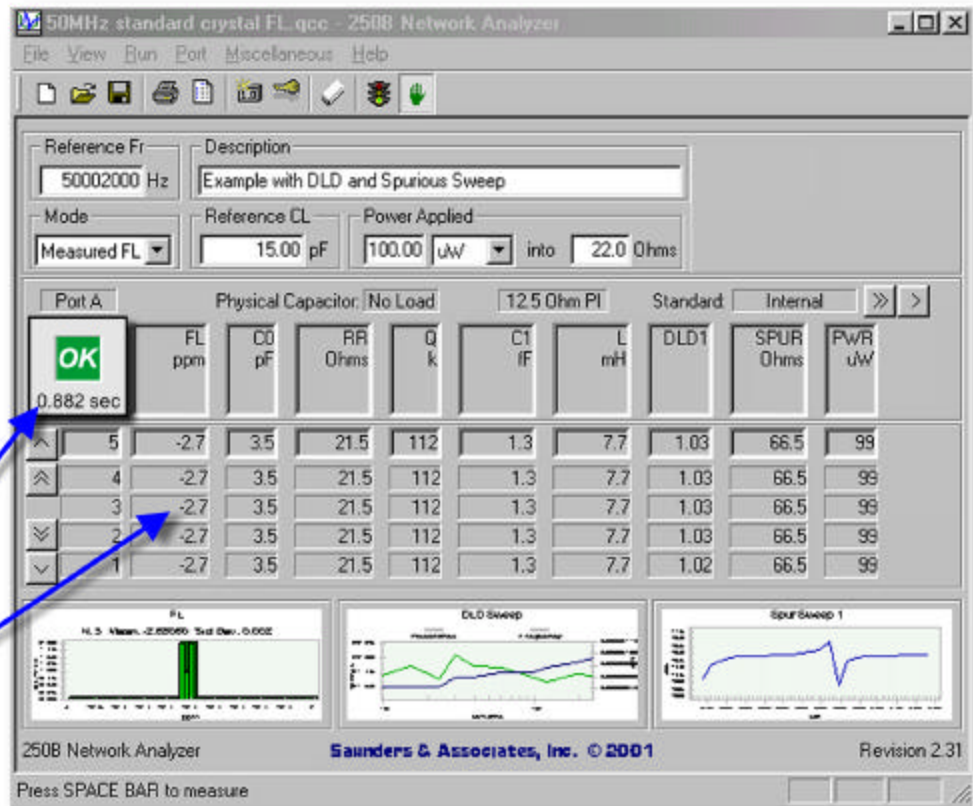
## Before Upgrade

Setup File : C:\350A\STD - FL  
 Description : 50 MEG  
 FR : 50002000Hz PWR : 100uW, 22Ω CL : 15 pF Measured FL

FL	C0	RR	Q	C1	L	DLD	SPUR	PWR
ppm	pF	Ohms	k	fF	mH		Ohms	uW
-1.5	3.5	21.4	112	1.3	7.6	1.02	66.4	104
								<b>TIME= 2.842s</b>

Slow Measurement Time

## After Upgrade



Note: The above measurements were made with 10 power level DLD sweep and 25 step spurious frequency sweep.

Note: The measurement times do not include selector wheel movement, part binning, and part feeding time.

# SAUNDERS & ASSOCIATES, INC.